



MITSUBOSHI®

Industrial Power Transmission Products



Synchronous Power Transmission

Timing Belts
Rubber or Polyurethane
Curvilinear, Round or Trapezoidal Tooth

General Use
Office & Home Appliances
Heavy Duty Applications

TIMING BELTS

Giga Torque GX

G8M
G14M



Curvilinear Tooth • Rubber

Ultra heavy duty power transmission
High-tensile strength carbon cord
Abrasion resistant, low friction tooth fabric
High elastic, high hardness HNBR rubber
Narrower belt width reduces space, weight and noise
High heat resistance to 250°F

MEGA TORQUE GII, GIIP MEGA TORQUE GIII

MTS8M
MTS14M

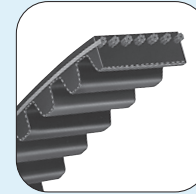


Curvilinear Tooth • Rubber

Ultra heavy duty power transmission
High-tensile strength carbon cord
Abrasion resistant, low friction tooth fabric
High elastic, high hardness HNBR rubber
Narrower belt width reduces space, weight and noise
High heat resistance to 250°F

MEGA TORQUE EX

MTS3M
MTS5M

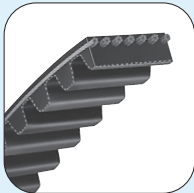


Curvilinear Tooth • Rubber

Very high precision positioning accuracy
Extra high torque use
Anti-abrasive, low friction nylon fabric carbon-fiber
Low noise, long operation life
Special pulley necessary

MEGA TORQUE EP

GP8M
GP14M

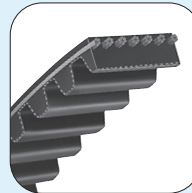


Curvilinear Tooth • Rubber

Improved nylon tooth fabric reduces tooth wear
Smooth meshing for lower friction and less noise
Combines advantages of the H and S profile systems
EPDM rubber reduces weight
High anti-static properties
Usable in H, GT and RPP pulleys

MEGA TORQUE G & U

MTS5M
MTS8M (G&U)
MTS14M

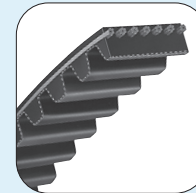


Curvilinear Tooth • Rubber or Polyurethane

Low speed, high torque use
G belt has glass-fiber cord and nylon tooth fabric
U belt made of polyurethane with aramid cord
Large transmission capacity, compact design possible
Used in home appliances, printers, general use

SUPER TORQUE G & U

S2M (G&U)
S3M (G&U)
S5M
S8M
S14M
DS3M
DS5M
DS8M
DS14M

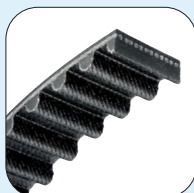


Curvilinear Tooth • Rubber or Polyurethane

High power transmission
Heat, water and flex fatigue resistance
Available double-sided and long-span
Glass-fiber (G) or aramid cord (U)
Cost efficient long operating life

H Series Timing Belt

H5M
H8M
H14M
DH8M

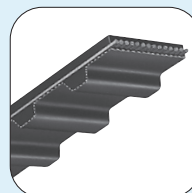


Round Tooth • Rubber

High power transmission
Heat, water and flex fatigue resistance
Low noise operation compared to chain/gear
Maintenance free, long operation life
For use in HTD pulleys

Timing Belt G & U

MXL (G)
T80 (U)
XL (G&U)
L (G&U)
H
XH
XXH
T5 (DT5)
T10 (DT10)
AT5
AT10

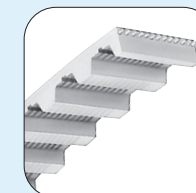


Trapezoidal Tooth • Rubber or Polyurethane

Thin, lightweight and superior flexibility
High precision for light-duty transmission
Available double-sided and long-span
Suitable for paper feeding, no contamination (U)
Smooth and quiet operation

FREESPAN™

T5
T10
AT5
AT10
L
H
HTD5M
HTD8M
HTD14M



Round or Trapezoidal Tooth • Polyurethane

Application for long span linear positioning
Can add special molded cover on back surface
Zinc-coated steel cord
Belt length available up to 100 meters/328 feet
Temperature range is from -22°F to 176°F

Frictional Forced Power Transmission

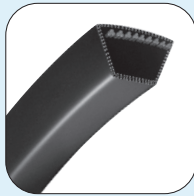
Some Slip Allowed
Rubber or Polyurethane
Wrapped or Raw Edge Cogged

Agricultural Use
General Industries
Office & Home Appliances

WRAPPED BELTS

Conventional V-belt

A
B
C
D
E

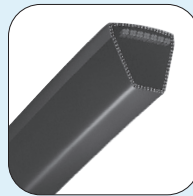


Wrapped • Rubber

Based on ARPM / IP-20
Most used heavy-duty power transmission belt
Offers heat, oil, and flex resistance
High anti-static properties
Economical and easily-available for replacement

Narrow V-belt

SPZ
SPA
SPB
SPC

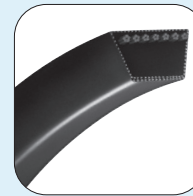


Wrapped • Rubber

Enables space saving and high speed drive
Reduced cost of operating and maintenance
Offers oil/heat resistance and electrical conductivity
Metric V-belts for DIN 7753/ISO4184
Available in variety of sizes

FHP V-belt

3L (M)
4L
5L

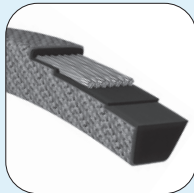


Wrapped • Rubber

Designed for light duty, fractional horsepower drives
Capable of handling drives with backside idler
External wrapping provides quiet execution
Smooth operation with minimum vibration
Heat and oil resistant, static conductive

MAXSTAR POWER (Green Label)

AK
BK

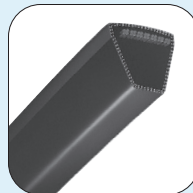


Wrapped • Rubber

Aramid cords limit stretch
Clutching cover fabric reduces friction/heat
Extra ordinary strength and durability
Oil and heat resistant rated of 180°F
Meets ARPM anti-static properties

MAXSTAR WEDGE V-belt

3V
5V
8V

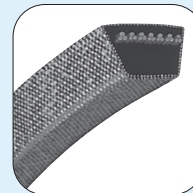


Wrapped • Rubber

Double power transmission capacity of conventional
Energy-saving and compact design application
Possible to operate with maximum speed of 40m/sec
Heat and oil resistant, static conductive
Effective for overall reduced drive cost installations

SUPER KB

3LK
4LK
5LK



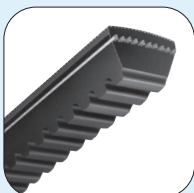
Wrapped • Rubber

Premium FHP belt with aramid fiber tensile cords
Use where heavy shock load stretch is a concern
Designed for greater horse power requirements
Special outer covering for smooth clutching
High temperatures/humidity, oil, cracking resistant

RAW EDGE COGGED BELTS

TRIPLEX

AX
BX
CX

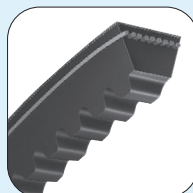


Raw edge cogged • Rubber

Based on ARPM / IP-20
Most used heavy-duty power transmission belt
Offers heat, oil, and flex resistance
High anti-static properties
Economical and easily-available for replacement

MAXSTAR WEDGE SUPREME Narrow Cogged V-belt

3VX
5VX
SPZX
SPAX
SPBX
SPCX

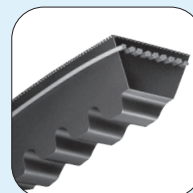


Raw edge cogged • Rubber

Greater wedge effect allows for double the power
Recommended for compact design drives
Reduced cost of operating and maintenance
Offers oil/heat resistance and electrical conductivity
Metric V-belts for DIN 7753/ISO4184

MAXSTAR POWER EP-X

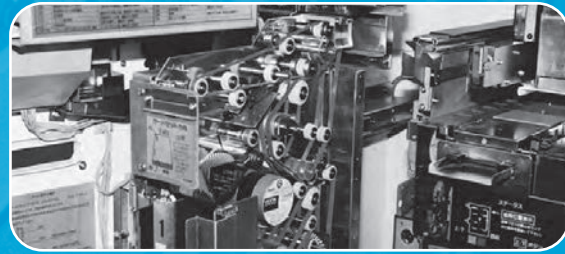
3VX
5VX
SPZX
SPAX
SPBX
SPCX



Raw edge cogged • Rubber

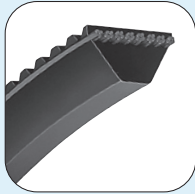
EPDM rubber and PET cord improves tension stability
Highly flexible, crack resistant, high stiffness
Power rating is 30% higher than standard cogged type
Maintenance free and energy efficient
Antistatic conforming to ISO1813

POLYURETHANE BELTS



POLYMAX

3M
5M
7M
11M

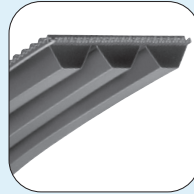


Wide angle • Polyurethane

Wide-angle belt of approximately 60 degrees
High-speed power transmission with compact design
Maintenance-free and stretch resistance
Excellent weather resistance
Matched set available for single and multi belts

Multi POLYMAX

3M
5M
7M
11M

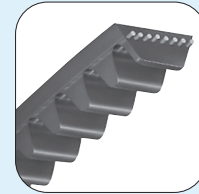


Wide angle • Polyurethane

Wide-angle belt of approximately 60 degrees
High-speed power transmission with low vibration
Maintenance-free and stretch resistance
Excellent weather resistance
Used in home appliances, agricultural or general use

MB Belt

MB



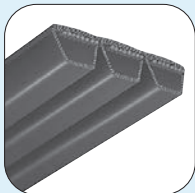
Raw edge cogged • Polyurethane

Small transparent V-belt for light-duty
Highly flexible with small slippage
Can be used with a smaller diameter pulley
Excellent abrasion resistance and clean operation
Excellent oil resistance

BANDED BELTS

Conventional V-belt Banded

A
B
C
D

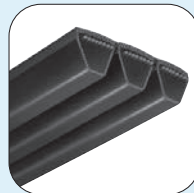


Wrapped • Rubber

Designed for multiple belt applications
Frictional and wedging principles prevent slip
Banding prevents belt whip, turnover and jumping off
Lateral rigidity keeps belt running in straight line
Reduced wear for strong pulsating or shock loads

Narrow V-belt Banded

SPB
SPC

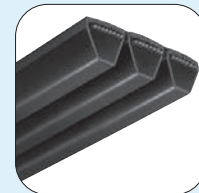


Wrapped • Rubber

Metric V-belts for DIN 7753/ISO4184
Designed for multiple belt applications
Enables space saving and high speed drive
Banding prevents belt whip, turnover and jumping off
Offers oil/heat resistance and electrical conductivity

Multi MAXSTAR WEDGE

3V
5V
8V

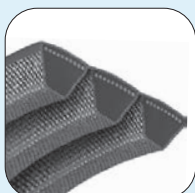


Wrapped • Rubber

Designed for multiple belt applications
Effective in preventing belt whip, turnover or jumping
Lateral rigidity keeps belt running in a straight line
Prevents slip at low tension and low bearing loads
Reduced wear for strong pulsating or shock loads

SUPER WEDGE II

5VK
8VK



Wrapped • Rubber

Designed for extra heavy duty applications
Aramid cords with clutching cover fabric
Reduced belt stretch under heavy loads and torque
High working loads, high shock loads
Narrow width

TRIPLEX Banded

AX
BX
CX



Raw edge cogged • Rubber

Use for heavy shock and pulsating load applications
Prevents belt whip, turnover, vibration, and jumping
Lateral rigidity keeps belt running in a straight line
Frictional and wedging principles of the V-belt drive
Hinders slip at low tension and low bearing loads

Multi MAXSTAR WEDGE SUPREME

3VX
5VX



Raw edge cogged • Rubber

Use for heavy shock and pulsating load applications
Prevents belt whip, turnover, vibration and jumping
Lateral rigidity keeps belt running in a straight line
Frictional and wedging principles of the V-belt drive
Hinders slip at low tension and low bearing loads



Product Classification

Conventional V-belts for ARPM / IP-20

Conventional V-belts are most widely used power transmission belts. Economical and easily obtained for replacement.

Sections	Wrapped type : A / B / C / D / E TRIPLEX : AX / BX / CX
Working temperature	Wrapped type : -40 to +158°F TRIPLEX : -22 to +194°F
Electrical conductivity	Suitable for ARPM IP-3-3

MAXSTAR Wedge V-belts for ARPM / IP-22

MAXSTAR Wedge V-belts have double power transmission capacity of conventional V-belts due to greater wedge effect. It features high speed transmission, energy saving, and compact design.

Sections	Wrapped type : 3V / 5V / 8V Raw Edge type : 3VX / 5VX
Working temperature	-22 to +194°F
Electrical conductivity	Suitable for ARPM IP-3-3

Narrow V-belts for DIN 7753 / ISO 4184

Narrow V-belts enable space saving, high speed drive, and reduce the cost of operating and maintenance. It features oil/heat resistance and electrical conductivity.

Sections	Wrapped type : SPZ / SPA / SPB / SPC Raw Edge type : SPZX / SPAX / SPBX / SPCX
Working temperature	-22 to +194°F
Electrical conductivity	Suitable for ISO 1813

Banded V-belts

Banded V-belts are made up of two or more standard V-belts connected together at the top of the belts. Banded V-belts have the advantage of preventing the belts from turning over or getting thrown off the drive even when belt vibration occurs.

Sections	Wrapped type : A / B / C / D / EB / C / D / J / 3V / 5V / 8V / SPB / SPC Raw Edge type : BX / CX / 3VX / 5VX
Electrical conductivity	Suitable for ARPM IP-3-3

Hexagonal V-belts for ARPM / IP-21

Hexagonal V-belts are recommended for serpentine drives where the power must be transmitted by both the top and the bottom of the belts. Excellent flexibility in both directions.

Sections	AA / BB / CC
Electrical conductivity	Suitable for ARPM IP-3-3

Perforated V-belts

Perforated open-end V-belts are designed for easy installation with metal fasteners and a screwdriver. These belts are recommended for temporary use or when installation of the standard V-belts is difficult.

Sections	M / A / B / C
Electrical conductivity	Suitable for ARPM IP-3-3

RIBBED BELTS

RIBSTAR G

J
PK
L

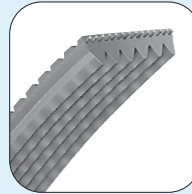


V-ribbed • Rubber

High-efficient operation at high speed
High flexibility belt
Ideal for use on small diameter pulleys
Excellent heat and abrasion resistance
Compact design application, low belt vibration

RIBSTAR U

JT
JBT
HB



V-ribbed • Polyurethane

High flexibility with nylon cord
Ideal for small diameter pulleys
Excellent flex fatigue resistance
Smooth revolution with little vibration
Withstands high-speed operation

FLAT BELTS

FLEXSTAR Belt

FL
FM
FH

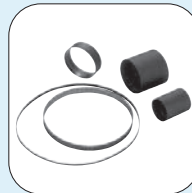


Rubber

Large power transmission
Compact design application and cost reduction
Smooth and quiet operation with low vibration
Maximum speed for 60m/sec
Excellent heat and oil resistance, anti-static

FLEXSTAR J

J8GA
J8GE
K8GD
J8GC1
J8GC2
J8GC5
J8H
J8HB
J6H
J6HB
J3H
J3HB
JL
JL3
JLB
JLU5
JLU6-N
JLU6-D
JN



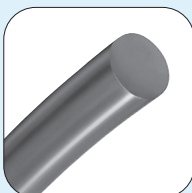
Rubber or Polyurethane

High-precision flat belt
Thin, flexible and seamless
Designed especially for conveyance
Maintenance-free

SPECIALTY BELTS

STAR ROPE & SUPER STAR ROPE Plain V-rope & Hexagonal-rope

ø2
ø3
ø4
ø5
ø6
ø7
ø8
ø9
ø10
ø12
ø15
M
A
B
AA
BB



Open-end type • Polyurethane

Easy to join and adjust length by heat welding
Excellent abrasion and oil resistance
High hardness, high elasticity, weather resistant
Applicable in complex power transmission systems

Hexagonal V-belt

AA
BB
CC



Double angle • Rubber

Power transmitted on both top and bottom of belt
Flex in both directions for positive pulley contact
Good for serpentine or reverse bend drives
Oil and heat resistant, static conductive

Perforated V-rope

M
A
B
C



Rubber

Spaced perforations to accommodate splicing
Uses a metal fastener to create specific length
High-strength multi-fiber fabric
High resistance to oil, heat, and abrasion
Long durability and corrosion resistance

Global Factories & Sales Offices



JAPAN

- **Mitsuboshi Belting Ltd.**
(Kobe Head Office)
4-1-21 Hamazoe-dori, Nagata-ku,
Kobe 653-0024, Japan
Tel: +81-78-671-5071 Fax: +81-78-685-5670
- (Tokyo Head Office)
2-3-4 Nihonbashi Chuo-ku,
Tokyo 103-0027, Japan
Tel: +81-3-5202-2500 Fax: +81-3-5202-2520

ASIA

- **MITSUBOSHI OVERSEAS HEADQUARTERS PRIVATE LIMITED**
14 Jurong Port Road, Singapore 619091
Tel: +65-6265-3933 Fax: +65-6265-0954
E-mail: moh_sales@mitsuboshi.com
- **STARS TECHNOLOGIES INDUSTRIAL LIMITED**
Eastern Seaboard Industrial Estate 64/40 Moo 4,
Tambon Pluakdaeng, Amphur Pluakdaeng,
Rayong 21140 Thailand
TEL: +66-38-954-738 FAX: +66-38-954-740
- **PT. SEIWA INDONESIA**
JL. Lombok I, Blok M2-2, Kawasan Industri
MM2100, Cikarang Barat, Bekasi 17520, Indonesia
Tel: +62-21-898-0324 Fax: +62-21-898-0325
- **PT. MITSUBOSHI BELTING INDONESIA**
Jl. Industri Raya Blok D No.4, Pasir Jaya,
Jatiuwung, Kota Tangerang 15135, Indonesia
Tel: +62-21-590-2070 Fax: +62-21-590-2071
- **PT. MITSUBOSHI BELTING SALES INDONESIA**
Wisma 77 Tower 1 Lantai 2, Jl. Letnan Jenderal S. Parman,
RT/RW: 006/003, Kel. Slipi, Kec. Palmerah, Kota Jakarta Barat
11410, Indonesia
Tel: +62-21-536-3033 Fax: +62-21-5366-0399
E-mail: mbsi.sales@mitsuboshi.com
- **MBL SHANGHAI INTERNATIONAL TRADING CO., LTD.**
F8, NO.601 Tianshan Road, Shanghai, China
Tel: +86-21-3257-3802 Fax: +86-21-5206-7011

- **SUZHOU MITSUBOSHI BELTING CO., LTD.**
277 Liangang Road Suzhou New District Jiangsu 215129, China
Tel: +86-512-6665-8880 Fax: +86-512-6665-8886
- **MOI TECH HONG KONG LIMITED**
Unit 3, 20/F., Kowloon Plaza, 485 Castle Peak Road,
Kowloon, Hong Kong
Tel: +852-2403-5978 Fax: +852-2422-8308
- **MITSUBOSHI BELTING-INDIA PRIVATE LIMITED**
Plot No. R672, TTC Industrial Area, Rabale MIDC
Navi Mumbai - 400701 Maharashtra, INDIA
Tel: +91-22-27600016
E-mail: mbind.customer@mitsuboshi.com
- **MITSUBOSHI BELTING VIETNAM CO., LTD.**
Room No.1511, 15th Floor, ICON4 Tower,
No.243A De La Thanh St., Dong Da Dist,
Hanoi, VIETNAM
Tel: +84-4-3760-6625 Fax: +84-4-6266-2608
E-mail: vietnamsales@mitsuboshi.com

AMERICA

- **MBL (USA) CORPORATION**
601 Dayton Road, Ottawa, Illinois 61350 USA
Tel: +1-815-434-1282
E-mail: mblusa.sales@mitsuboshi.com
URL: www.mblusa.com

EUROPE

- **Mitsuboshi Belting Europe GmbH**
Hansemannstrasse 63, 41468 Neuss, Germany
Tel: +49- 2131-740940 Fax: +49- 2131-7409424
E-mail: Info_de@mitsuboshi.com
URL: www.mitsuboshi.de
- **MITSUBOSHI POLAND Sp.z o.o.**
Budynek B8 ul. 3-go Maja 8, 05-800 Pruszkow, Poland
Tel: +48-22-7383930